

Dummy Load w/Coupler, WR430

GERLING

Model GA1232
Model GA1239

GAE's line of high power and compact dummy loads have the highest ratio of power capacity to size of any commercially available load. These loads are most often used with circulators in an isolator configuration, but they are also useful as phantom loads for testing and calibration as well as traveling wave and variable Q applicators. A standard feature of the GA1232/9 is a coupler probe for measuring incident microwave power. When used with a standard 3-port circulator in an isolator configuration the GA1232/9 provides an economical means of monitoring reflected microwave power.

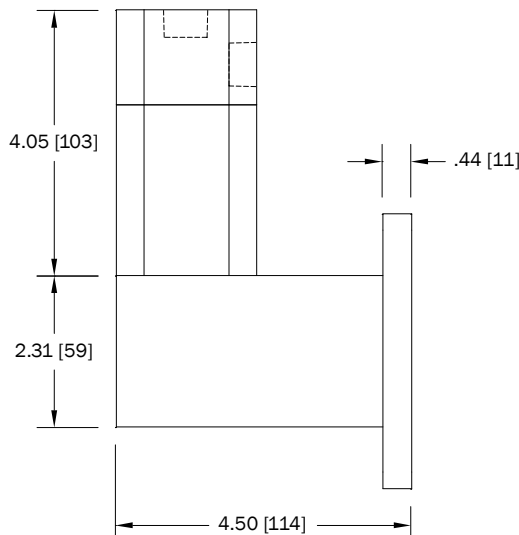
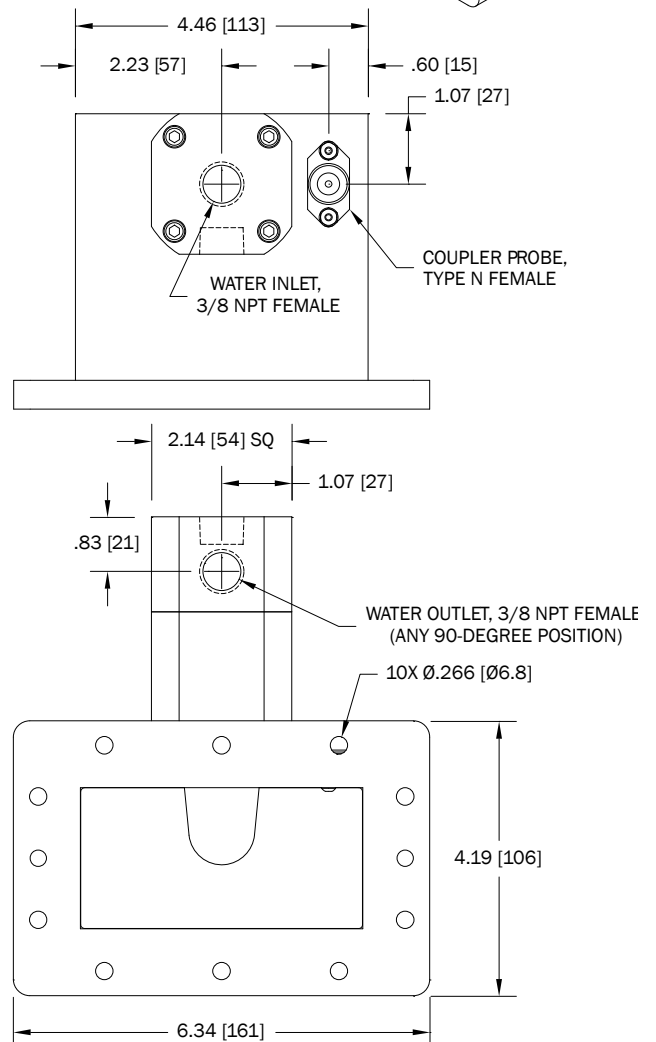
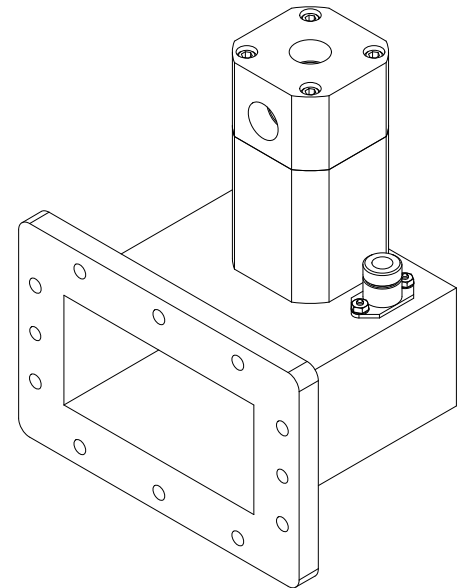
Model GA1232/9 uses water as the absorptive medium which flows through an internal dielectric insert. This design provides good performance and long life at up to 15kW/30kW continuous input power. The brass water connections minimize corrosion from harsh water supplies to further enhance reliability and life. The dielectric insert can be replaced easily by the user in the event of damage.

General Specifications:

Frequency	2450 MHz nominal
Input Power	GA1232: 15 kW continuous max. GA1239: 30 kW continuous max.
Waveguide	WR430 (RG105/U)
Input Flange	CPR430 (UG1711/U)
Return Loss	20 dB min. @ 2450 MHz
Coupler Probe	Type N Female
Coupling Factor	60 dB +/- 1 dB
Water Connections	3/8 NPT Female
Water Flow	.26 gpm (1 lpm) per kW input power, 70 psi max. inlet pressure
Construction	Dip brazed aluminum body, dielectric insert, brass water connections
Finish	Clear chemical film (Alodine)

Options:

- ◆ Flange interlock switch
- ◆ Water connection fittings (various types available)
- ◆ Alternate coupling factor



GERLING APPLIED ENGINEERING, INC.
(a Muegge GmbH company)

© 2011-2015 Gerling Applied Engineering, Inc.
PO Box 580816 • Modesto, CA 95358 • USA
Phone: +1-209-527-8960 • Fax: +1-209-527-5385
E-mail: sales@2450MHz.com • Web: www.2450MHz.com