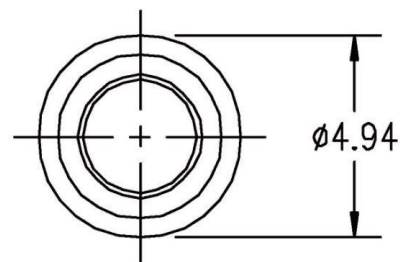


# MAGNETRON - 1200312\_SP

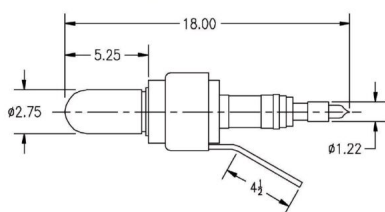
Categories: Magnetrons

Tube Outline Dimensions (mm(inch))



## BILDERGALERIE

Tube Outline Dimensions (mm(inch))



## ADDITIONAL INFORMATION

<b>Typ</b>	Magnetron
<b>OEM Item Number</b>	1200312_Sp
<b>Output Power CW [W]</b>	100000
<b>Frequency [MHz]</b>	915
<b>ISM Band</b>	L-Band
<b>Cooling</b>	air-cooled & water-cooled
<b>Orientation of HV and cooling connectors</b>	–
<b>Fastening / Studs</b>	including pole piece
<b>Orientation HV to fastening</b>	–
<b>Magnet</b>	–
<b>Cooling Connector Type</b>	1/2" – 13 UNC Female Thread
<b>Temperature sensor</b>	–