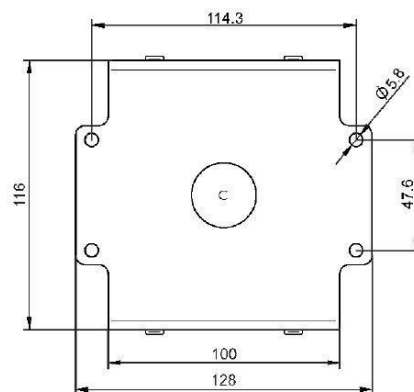


# MAGNETRON - MB2533A-120FL

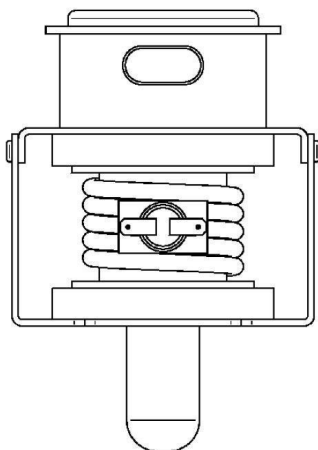
Categories: Magnetrons



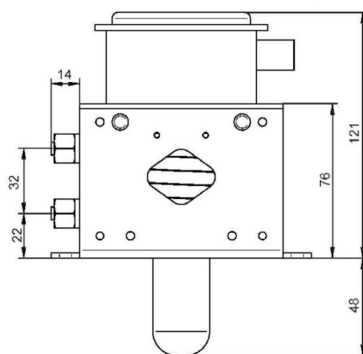
Tube Outline Dimensions (mm(inch))

## BILDERGALERIE

Tube Outline Dimensions (mm(inch))



Tube Outline Dimensions (mm(inch))



## ADDITIONAL INFORMATION

|   |   |
|---|---|
| <b>Typ</b>                                      | Magnetron                                     |
| <b>OEM Item Number</b>                          | MB2533A-120FL                                 |
| <b>Output Power CW [W]</b>                      | 2000  |
| <b>Frequency [MHz]</b>                          | 2450  |
| <b>ISM Band</b>                                 | S-Band  |
| <b>Cooling</b>                                  | water-cooled                                  |
| <b>Orientation of HV and cooling connectors</b> | 180°  |
| <b>Fastening / Studs</b>                        | 4 x Through-hole 5,8 (no studs)               |
| <b>Orientation HV to fastening</b>              | 0°  |
| <b>Magnet</b>                                   | Packaged magnet                               |
| <b>Cooling Connector Type</b>                   | Pipe socket with union nut 1/4" Female Thread |
| <b>Temperature sensor</b>                       | 50 °C (122 °F)                                |