

Industrial Microwave +  
Plasma Systems



# Isolator, Model GA1116C

2-Port Isolator, 6 kW, WR340

## Features:

- High power
- High efficiency
- High reliability
- Low insertion loss
- Low input VSWR
- Low corrosion
- Reflected power coupler

The model GA1116C 2-port isolator is designed for high power industrial heating applications requiring high reliability and rugged construction. This isolator is most often used for protecting magnetrons from the damaging effects of reverse microwave power. It is designed for continuous forward microwave power and will withstand a full reflection under continuous duty. A calibrated coupler port is provided for monitoring reverse power entering port 2.

Construction of the GA1116C is all aluminum waveguide. Reverse power is absorbed directly into water flowing through internal quartz tubes. All other water lines and fittings are copper or brass to minimize corrosion due to harsh cooling water supplies.

## Specifications:

<b>Frequency</b>	2450 MHz +/- 25 MHz	<b>Input VSWR</b>	1.2 max. (port 1)
<b>Forward Power</b>	6 kW continuous max.	<b>Insertion Loss</b>	0.2 dB max. (port 1 to port 2)
<b>Reverse Power</b>	6 kW continuous max.	<b>Isolation</b>	20 dB min. (port 2 to port 1)
<b>Waveguide</b>	WR340 (R26)	<b>Coupler Probe</b>	Type N female
<b>Flanges</b>	CPRF (UDR), M6 tapped holes	<b>Coupler Calibration</b>	-65 dB +/- 1 dB
<b>Water Fittings</b>	1/4 NPT female	<b>Operating Temperature</b>	+10 C to +50 C ambient
<b>Water Flow</b>	145 psig (1 MPa) max. inlet pressure, 10-35 C inlet temp (must be above dew point)		

GERLING APPLIED ENGINEERING, INC.  
(a Muegge GmbH company)

1064 Woodland Avenue, Suite U  
Modesto, CA 95351 USA

Phone: +1-209-527-8960 ▪ Fax: +1-290-527-5385

GAE\_Sales@muegge-gerling.com ▪ www.muegge-gerling.com

All specifications subject to change without notice.

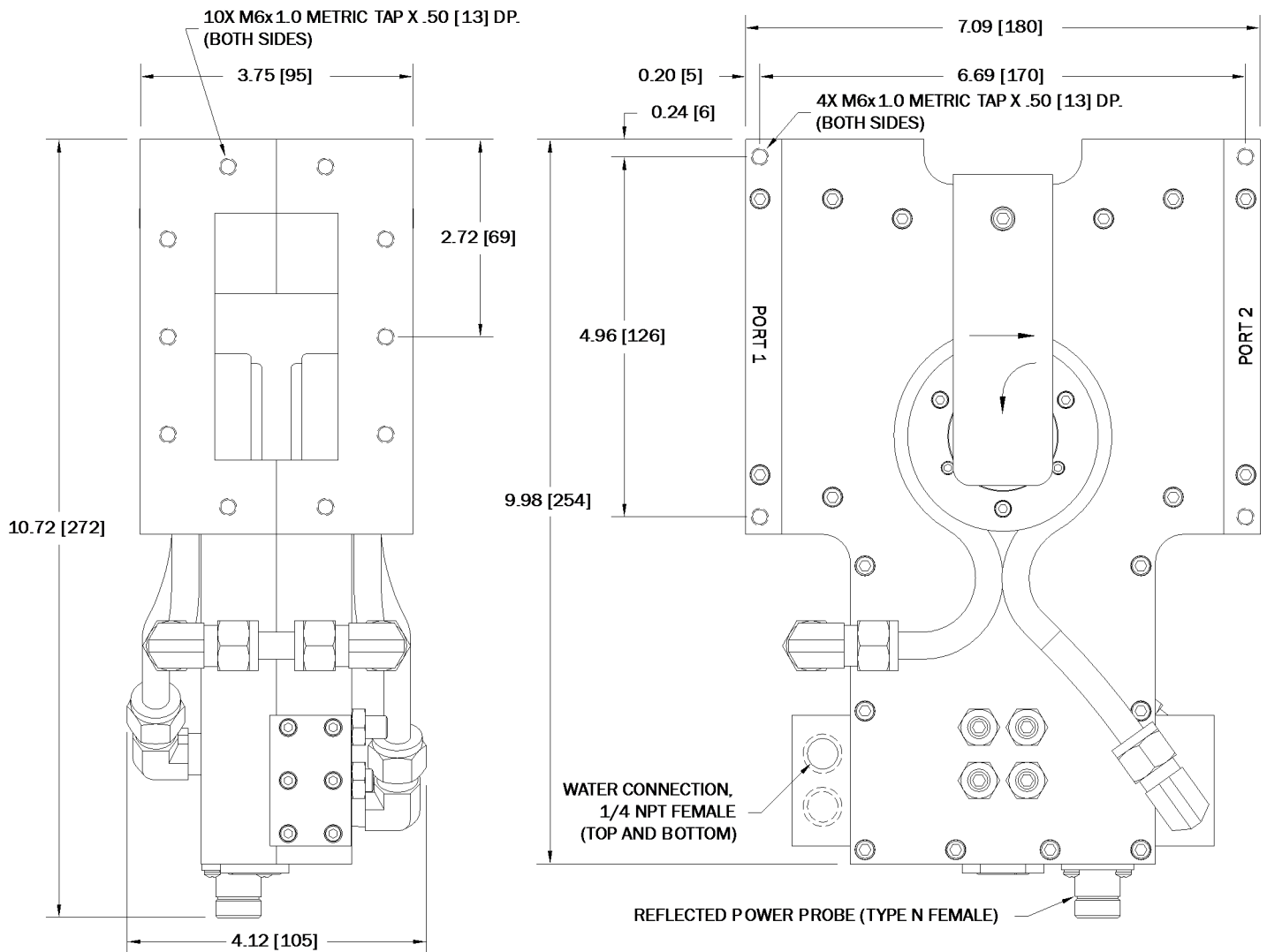
Revised 12OCT17

# 2-Port Isolator, Model GA1116C

Industrial Microwave +  
Plasma Systems



## Outline Dimensions (inch):



## Options:

- Flange interlock switch
- Flange studs
- Alternate coupler probe calibration

All specifications subject to change without notice.

Revised 12OCT17

GERLING APPLIED ENGINEERING, INC.  
(a Muegge GmbH company)

1064 Woodland Avenue, Suite U  
Modesto, CA 95351 USA

Phone: +1-209-527-8960 • Fax: +1-290-527-5385

Sales@muegge-gerling.com • www.muegge-gerling.com