

# Dummy Load w/Coupler, WR284

GERLING

## Model GA1210 Model GA1211

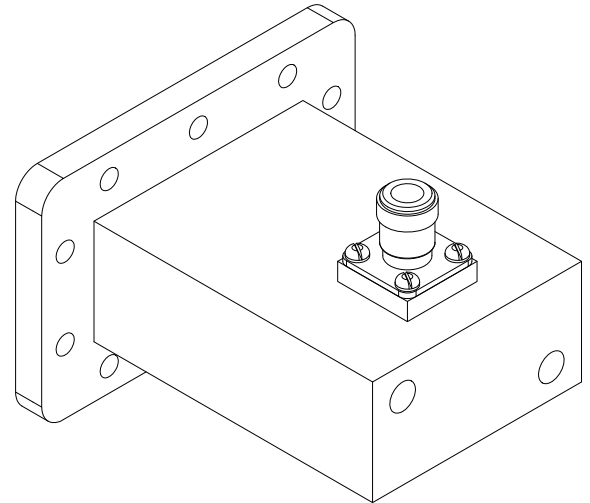
GAE has extended its popular line of high power and compact dummy loads by offering a series with coupler ports for measuring incident microwave power. When used with a standard 3-port circulator in an isolator configuration these loads provide an economical means of monitoring reflected microwave power.

As with all GAE dummy loads, models GA1210 and GA1211 use water as the absorptive medium in a polyethylene insert to provide excellent performance and long life at up to 3kW continuous input power. The naval brass water connection block minimizes corrosion due to harsh water supplies to further enhance reliability and extend life.

Model GA1211 features the popular WR284 Q-D (quick-disconnect) round flange that uses a quick-release clamp (model GA8410) for waveguide connections.

### General Specifications:

Frequency	2450 MHz nominal
Input Power	3 kW continuous max.
Waveguide	WR284 (RG75/U)
Input Flange	GA1210: CPR (UG1725/U) GA1211: Q-D Round (UG584/U)
Output Connector	Type N Female
Return Loss	20 dB min. @ 2450 MHz
Coupling Factor	60 dB +/- 1 dB
Water Connections	1/8 NPT Female
Water Flow	1.0 gpm nominal, 70 psi max. inlet pressure
Construction	Dip brazed aluminum, brass water connections
Finish	Clear chemical film, black paint



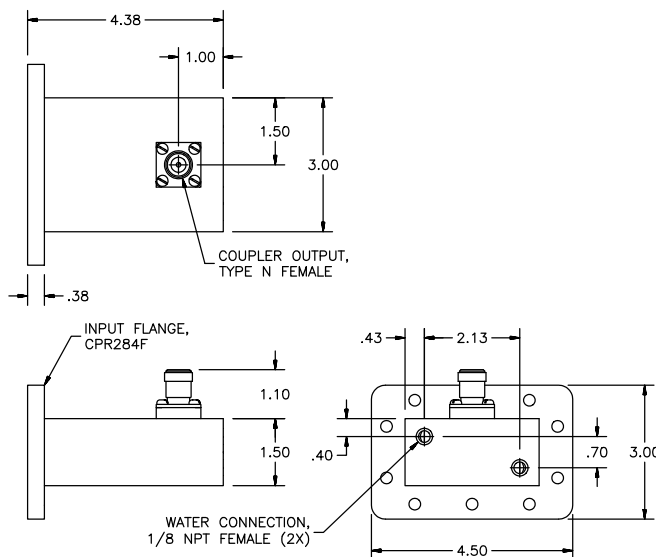
Model GA1210

### Options:

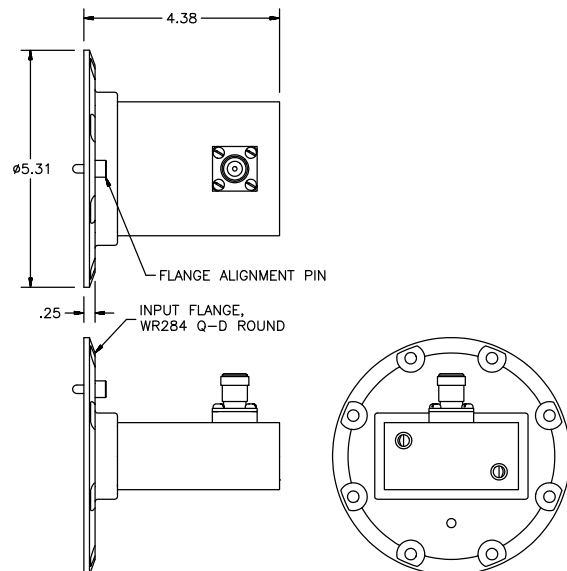
- ◆ Heli-Coils or studs on flange (any combination)
- ◆ Flange interlock switch
- ◆ Water connection fittings (various types available)
- ◆ Alternate coupling factor

### Accessories:

- ◆ GA8410 quick-release flange clamp



MODEL GA1210



MODEL GA1211



GERLING APPLIED  
ENGINEERING, INC.

© 2007-2012 Gerling Applied Engineering, Inc.  
PO Box 580816 • Modesto, CA 95358 • USA  
Phone: +1-209-527-8960 • Fax: +1-209-527-5385  
E-mail: sales@2450MHz.com • Web: www.2450MHz.com