

Flexible Waveguide, WR340

GERLING

Model GA2102

Specifications:

Waveguide	WR340
Flange	UG-1712/U
Material	Brass flanges, corrugated copper waveguide
Construction	Silver solder
Input Power	8 kW average max.
VSWR	1.10 max.
Insertion Loss	.02 dB/ft max.
Length A (min/max)	4.00 [102]; 48.00 [1219]
Bend Radius (min)	E-plane: 4" [102]; H-plane: 12" [305]
Max. Twist	7.5°/in. (3°/cm)
Operating Temp	400 °F (204 °C) max.

Options:

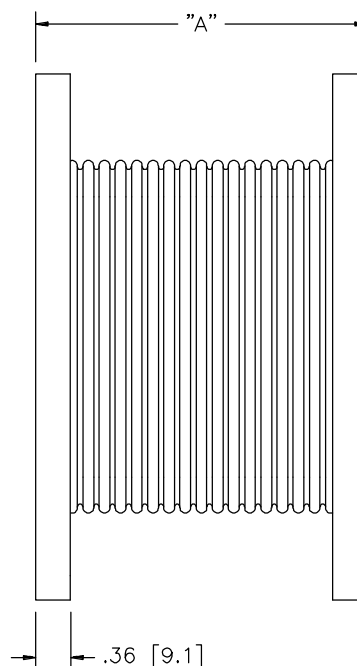
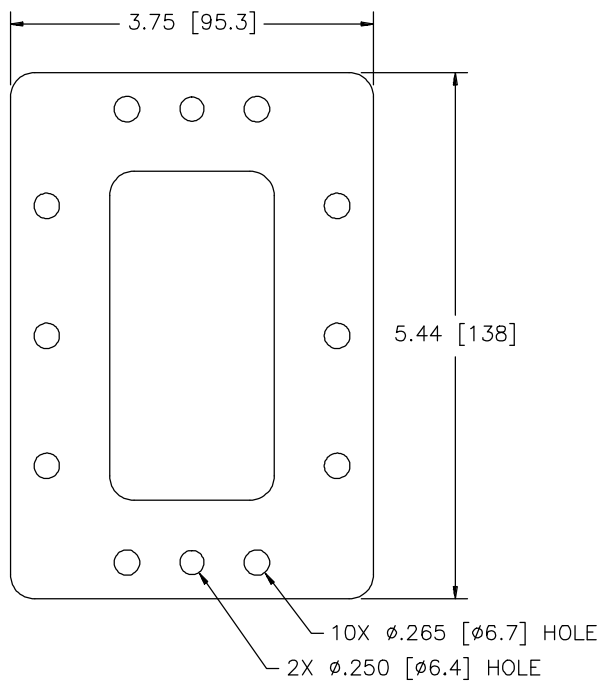
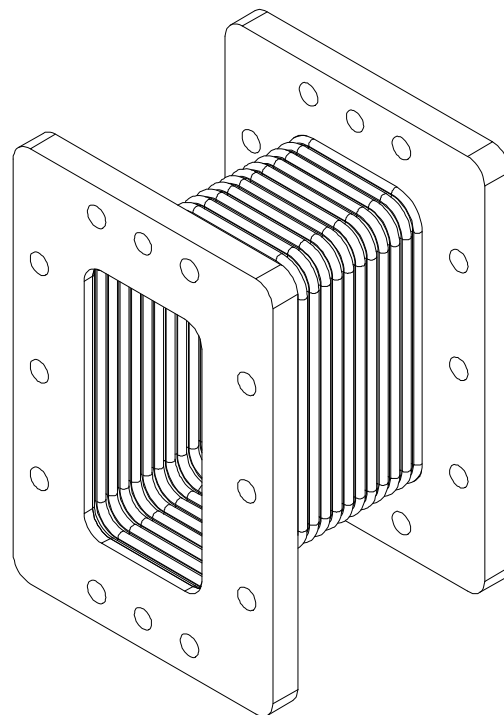
- ◆ Threaded flange holes (see ordering information)
- ◆ Flange Interlock switches

Ordering Information:

Model Number Format: **GA2102-X.XX**
 X.XX = "A" dimension (inches)

Optional threaded inserts: Add "H" or "M" after dimension suffix for threaded holes in one flange only, "HH" or "MM" for threads in both flanges (H = 1/4-20 UNC; M = M6 metric)

Example: **GA2102-12.00H** designates Flexible Waveguide, WR340, 12.00 inches long with threaded holes in one flange only



GERLING APPLIED
ENGINEERING, INC.

© 2003-2009 Gerling Applied Engineering, Inc.
 PO Box 580816 • Modesto, CA 95358 • USA
 Phone: +1-209-527-8960 • Fax: +1-209-527-5385
 E-mail: sales@2450MHz.com • Web: www.2450MHz.com