

Straight Rigid Waveguide

GERLING

Model GA2201
Model GA2202
Model GA2203

Specifications:

Waveguide	GA2201: WR284 GA2202: WR340 GA2203: WR430
Flange	GA2201: UG1725/U GA2202: UG554/U GA2203: UG437B/U
VSWR	1.02 max.
Insertion Loss	.01 dB/ft max.
Length A (min/max)	1.50 (38,1); 48.00 (1219)
Material	6061-T6 aluminum
Construction	Dip braze per MIL-B-7883C, Type 5, Grade B
Finish	Clear chemical film per MIL-C-5541, Class 1A

Options:

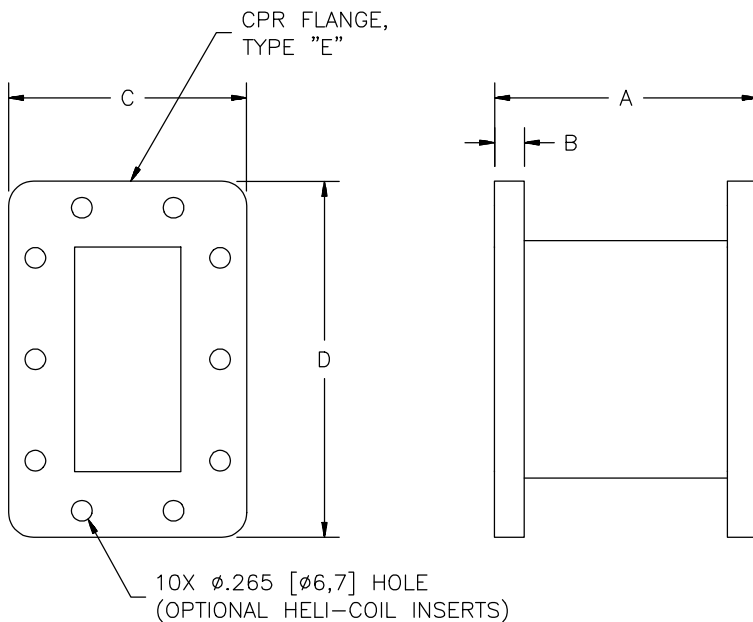
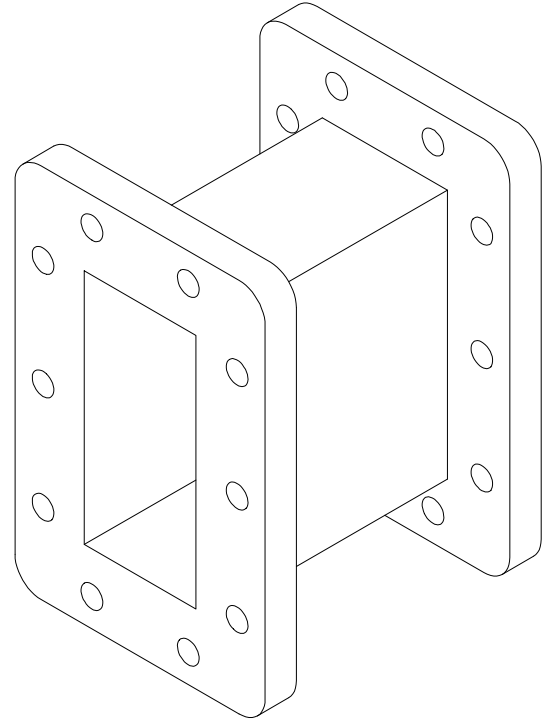
- ◆ Flange interlock switches
- ◆ Alternate finish

Ordering Information:

Model Number Format: **GA2201-X.XX**
 X.XX = "A" dimension (inches)

Optional threaded inserts: Add "H" or "M" after dimension suffix for threaded inserts in one flange only, "HH" or "MM" for inserts in both flanges (H = 1/4-20 UNC; M = M6 metric)

Example: **GA2201-12.00H** designates rigid Waveguide, CPR284, 12" long with inserts in one flange only



	GA2201	GA2202	GA2203
WAVEGUIDE	WR284	WR340	WR430
B	.38 [9,7]	.44 [11,2]	.44 [11,2]
C	3.00 [76,2]	3.75 [95,3]	4.19 [106,4]
D	4.50 [114,3]	5.44 [138,2]	6.34 [161,0]
E	UG1725/U	UG554/U	UG437B/U



**GERLING APPLIED
 ENGINEERING, INC.**

© 2003 Gerling Applied Engineering, Inc.
 PO Box 580816 • Modesto, CA 95358 • USA
 Phone: +1-209-527-8960 • Fax: +1-209-527-5385
 E-mail: sales@2450MHz.com • Web: www.2450MHz.com