

The unique BoltGuard™ family of waveguide flange interlock devices are designed to meet rigorous safety requirements for waveguide flange connections. The basic element of the BoltGuard™ is a mechanically operated dry-contact switch that is actuated only when its respective bolt is tightened. When two BoltGuard™ modules are used together with special flange brackets and wired in series they provide assurance that the flange connection is secure. This level of safety is far superior to typical flange interlock devices that can be actuated without tightening the flange bolts.

Special brackets are available for three standard waveguide flanges. Either the individual BoltGuard™ modules or bracket assemblies can be installed onto typical waveguide flanges without modification to the waveguide component. The standard bracket configuration with threaded fasteners at all hole locations facilitate installation of the BoltGuard™ assembly and reduce the labor associated with waveguide flange connection. Customized bracket assemblies are virtually unlimited, offering a variety of module locations, fastener types, connectors and wiring harness configurations.

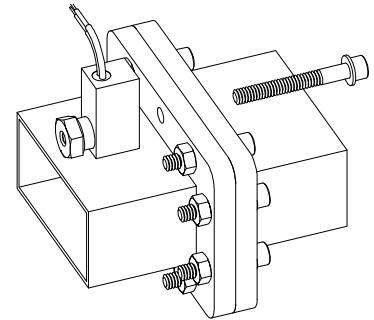
Preliminary Specifications:

- Mating Flange GA8408-CPR284: UG1725/U
GA8408-WR340: UG554/U
GA8408-WR430: UG437/U
- Electrical 500 mA @ 120 VAC or 28 VDC; 250 mA @ 250 VAC
(switch element is UL approved)
- Connections 12" flying leads, 22 AWG, UL1569
- Environmental -30°C to 65°C, 20-80% RH (non-condensing)

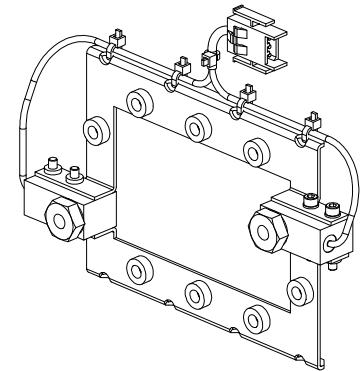
Options:

- ◆ Any combination of clearance holes and threaded studs
- ◆ Custom wiring harness with connector

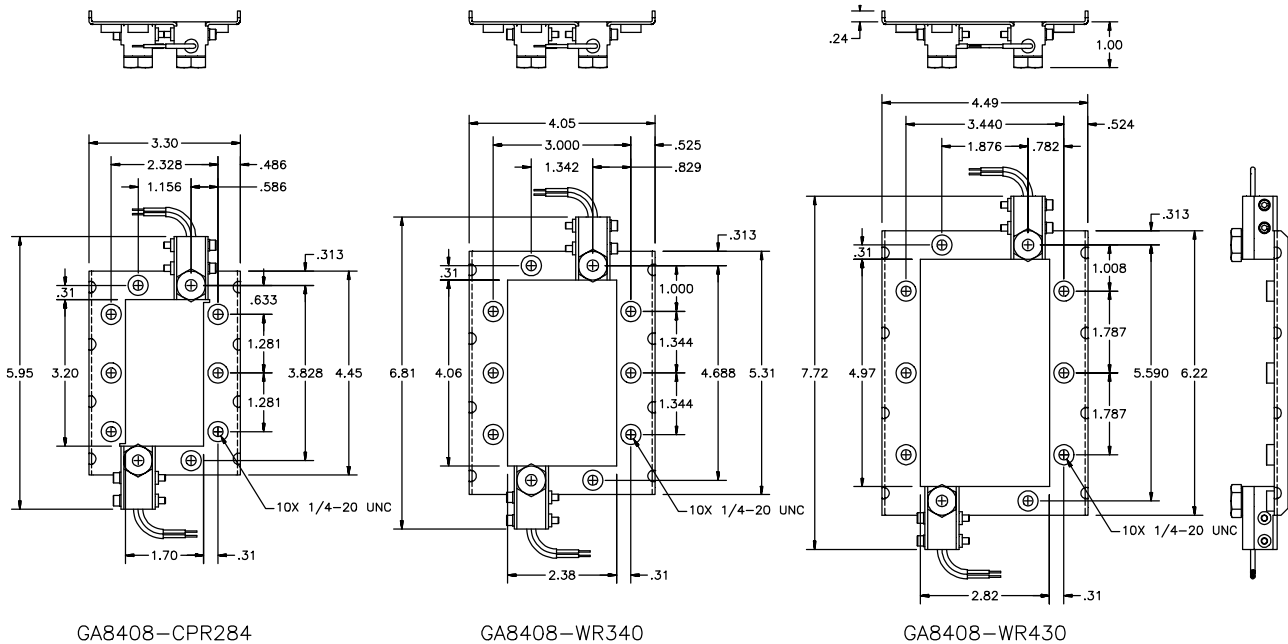
Model GA8408



**Model GA8408
(installed on standard flange)**



**Model GA8408-WR340
(shown with custom harness)**



All dimensions are in inches (mm).

Specifications subject to change without notice.

Updated 31MAY00

© 2000 Gerling Applied Engineering, Inc.
P.O. Box 580816 • Modesto, CA 95358 • USA
Phone: +1-209-527-8960 • Fax: +1-209-527-5385
E-mail: GAE@2450MHz.com • Web: www.2450MHz.com