

Industrial Microwave +  
Plasma Systems

**MUEGGE**

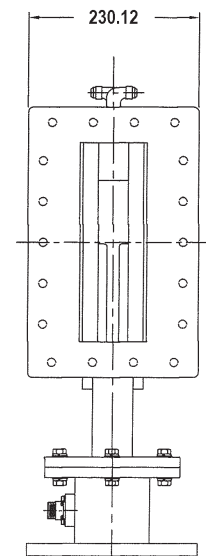
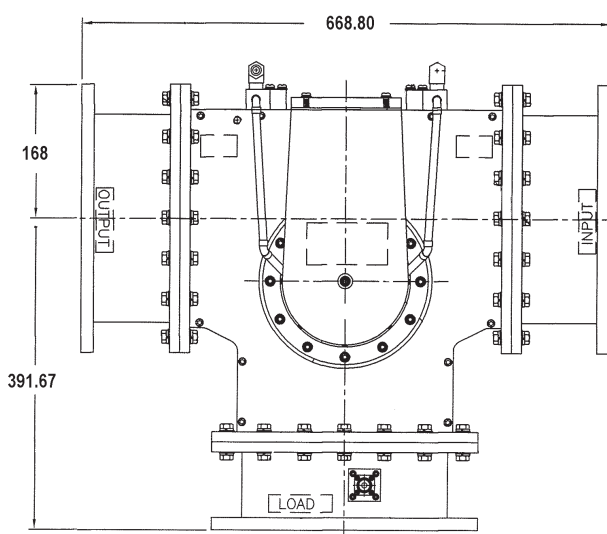
# Circulator MW1001B-260CC

Waveguide Components (100 kW / 915 MHz / WR 975)

## Features:

- High power
- High efficiency
- High reliability
- Low insertion loss
- Prepared for ARC-Sensor (optical fibre)

## Outline Dimensions (mm):



MUEGGE GMBH  
Hochstraße 4-6 · 64385 Reichelsheim  
Fon +49 (0) 6164 - 93 07 11 · Fax +49 (0) 6164 - 93 07 93  
info@muegge.de · www.muegge.de

# Circulator MW1001B-260CC

Industrial Microwave +  
Plasma Systems



## Specifications:

<b>Frequency:</b>	915 MHz +/-10 MHz
<b>Configuration:</b>	3 Port, T-Type
<b>Power (forward):</b>	Max. 100 kW cw
<b>VSWR:</b>	Max. 1.2 : 1
<b>Isolation:</b>	Min. 19.0 dB
<b>Insertion loss:</b>	Max. 0.20 dB
<b>Waveguide:</b>	WR 975
<b>Waveguide flange:</b>	CPR 975F
<b>Monitor coupling:</b>	60 dB +/-2 dB (forward power)
<b>Monitors:</b>	N female (load port)
<b>Cooling system:</b>	Demineralized water
<b>Cooling connectors:</b>	3/8" 6-6 CTX-B 37° flared 90°
<b>Cooling temperature range:</b>	20 °C +/-5 °C
<b>Cooling flow:</b>	Min. 12 l/min
<b>Cooling input pressure:</b>	Max. 8 bar
<b>Ambient temperature range:</b>	15 °C - 40 °C
<b>Relative humidity:</b>	Max. 80%, no condensation
<b>Dimensions (L x W x H):</b>	Approx. 669 mm x 580 mm x 231 mm

## Recommended system components:

- Water load 100 kW e.g. MW1018E-230CD