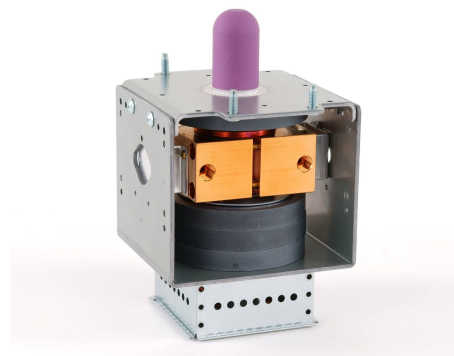
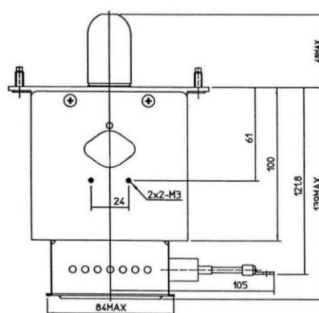
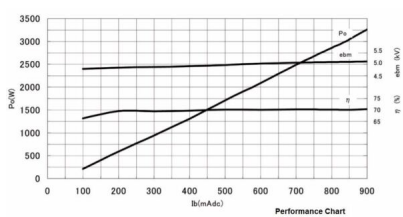


# MAGNETRON - 1200075

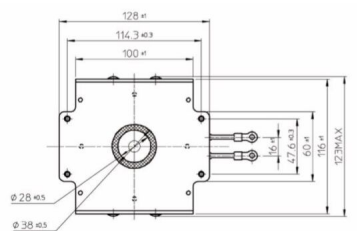
Kategorie: Magnetrons



## BILDERGALERIE



Tube Outline Dimensions (mm(inch))



Tube Outline Dimensions (mm(inch))

## ZUSÄTZLICHE INFORMATIONEN

|                                    |                      |
|------------------------------------|----------------------|
| <b>Art</b>                         | Magnetron            |
| <b>Hersteller-Artikel Nr.</b>      | 2M265E-D36MG         |
| <b>Leistung CW [W]</b>             | 3000                 |
| <b>Frequenz [MHz]</b>              | 2450                 |
| <b>ISM Band</b>                    | S-Band               |
| <b>Kühlungsart</b>                 | Wassergekühlt        |
| <b>Ausrichtung Kühler</b>          | 180°                 |
| <b>Befestigungsmöglichkeit</b>     | 4x M5 Bolzen (Studs) |
| <b>Richtung Befestigungsbolzen</b> | 0°                   |
| <b>Magnet</b>                      | Permanentmagnet      |
| <b>Kühlwasser Anschluss</b>        | G1/8" Innengewinde   |
| <b>Temperaturwächter</b>           | -                    |
| <b>Äquivalentes Produkt</b>        | 10207                |