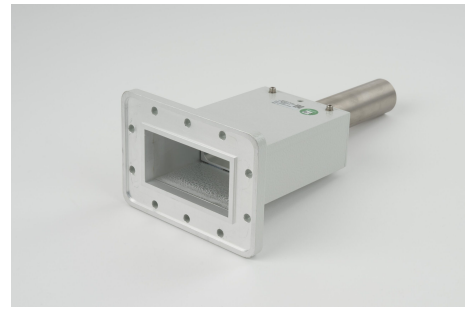


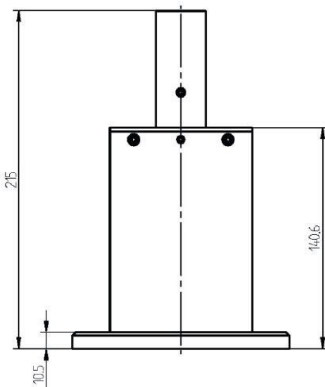
KURZSCHLUSSSCHIEBER - MW2009D-260ED

Category: Waveguide components

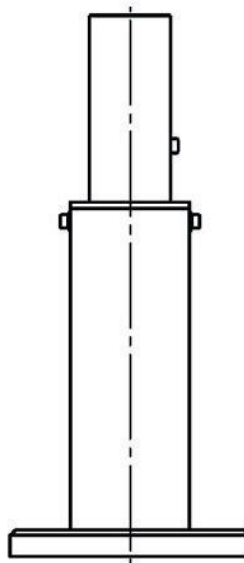


BILDERGALERIE

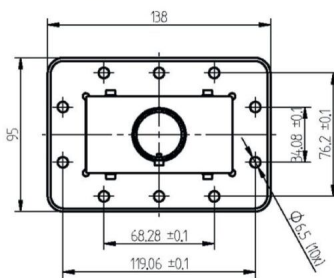
Outline Dimensions (mm(inch))



Outline Dimensions (mm(inch))



Outline Dimensions (mm(inch))



ADDITIONAL INFORMATION

Frequency [MHz]	2450
Output Power CW [W]	3000
Waveguide size	WR340 / R26
Flange	PDR
Product group	Short circuit slider