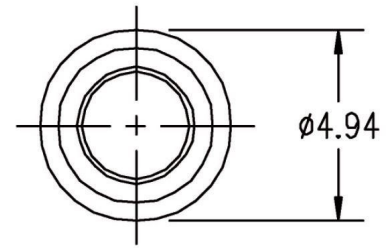


MAGNETRON - 1200324_SP

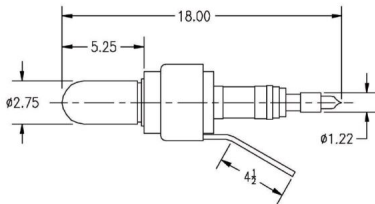
Category: Magnetrons

Tube Outline Dimensions (mm(inch))



BILDERGALERIE

Tube Outline Dimensions (mm(inch))



ADDITIONAL INFORMATION

Typ	Magnetron
OEM Item Number	1200324_Sp
Output Power CW [W]	75000
Frequency [MHz]	915
ISM Band	L-Band
Cooling	air-cooled & water-cooled
Orientation of HV and cooling connectors	-
Fastening / Studs	including pole piece
Orientation HV to fastening	-
Magnet	-
Cooling Connector Type	1/2" – 13 UNC Female Thread
Temperature sensor	-