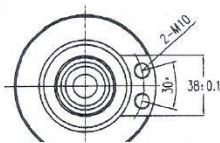
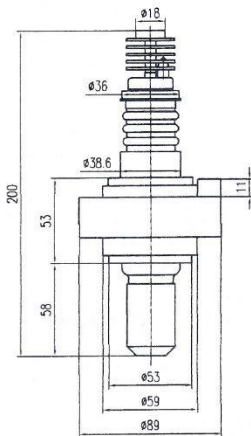
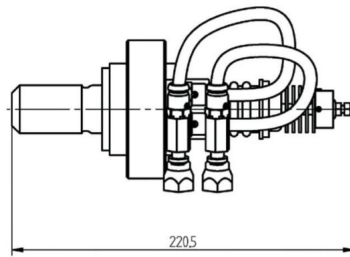
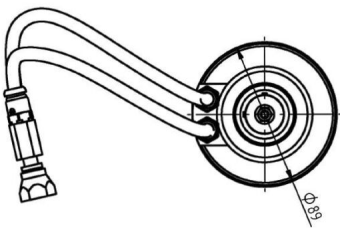


# MAGNETRON - MB2890A-180EV

Category: Magnetrons



## BILDERGALERIE



Tube Outline Dimensions (mm(inch))  
Basis type

## ADDITIONAL INFORMATION

<b>Typ</b>	Magnetron
<b>OEM Item Number</b>	
<b>Output Power CW [W]</b>	15000
<b>Frequency [MHz]</b>	2450
<b>ISM Band</b>	S-Band
<b>Cooling</b>	air-cooled & water-cooled
<b>Orientation of HV and cooling connectors</b>	–
<b>Fastening / Studs</b>	including pole piece
<b>Orientation HV to fastening</b>	–
<b>Magnet</b>	–
<b>Cooling Connector Type</b>	2 x female JIC 37° Swivel, on hose (hose length = 400 mm)
<b>Temperature sensor</b>	–